

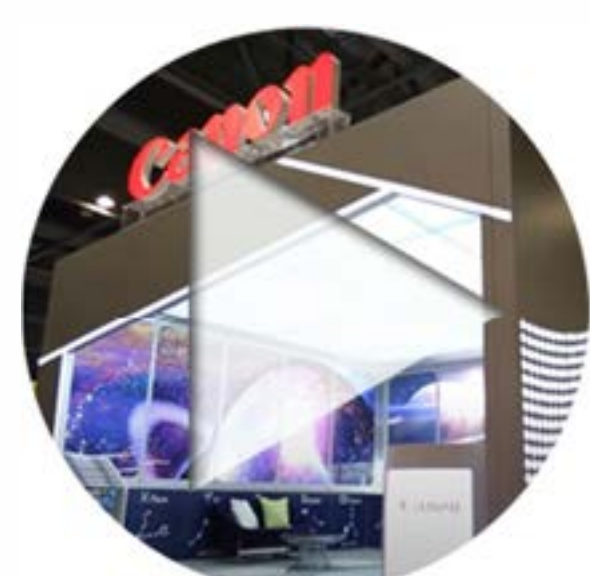


www.crosstownmetal.com



TABLE OF CONTENTS

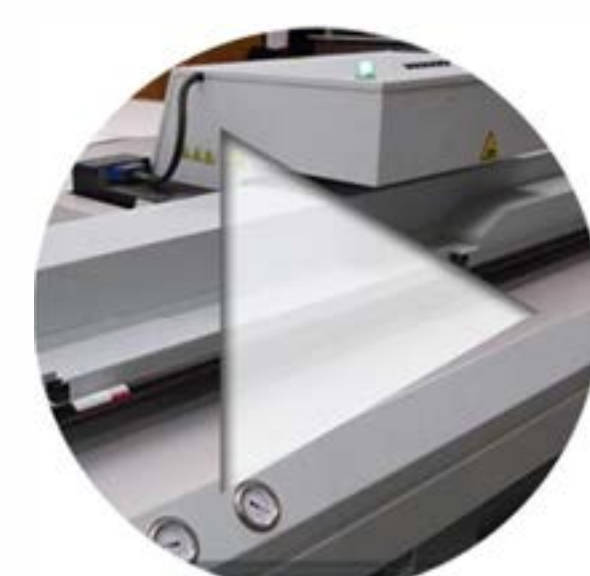
- ◆ **MONARCH METAL**
 - Wall Panel System
 - Standoffs
 - Standoffs Barrel
 - Standoffs Mounting Hardware
- ◆ **PRESENTATION SUITE**
- ◆ **APPLICATION**
- ◆ **SUBSTRATES**
 - Acrylic
 - Foam Boards
 - Corrugated Polypropylene
 - Wood/ Composites
 - Back Lit Banner



CANON EXPO



CANON SOLUTIONS Videos



DIMENSIONAL PRINTING

AWARDS

Worldwide recognition for quality and innovation

The Arizona series of UV flatbed printers has been winning awards since the introduction of the original Arizona 250 GT printer in September 2006. The awards validate the quality and innovation built into every Arizona series printer, now the most popular UV flatbed printer family in history.



PRODUCT OF THE YEAR

Arizona
2007- 2019
UV Flatbed + White
Arizona 2280 XT
September 2016



DIGITAL OUTPUT TOP 50

Arizona series
2007, 2008, 2009
2010, 2011, 2012,
2013, 2014, 2018



CANADIAN PRINTING AWARDS - 2019

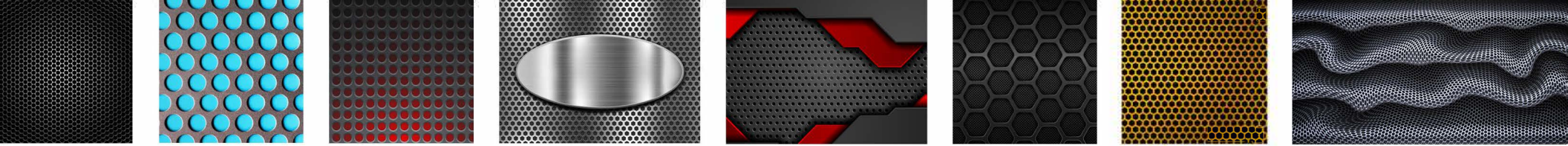
2018, 2019



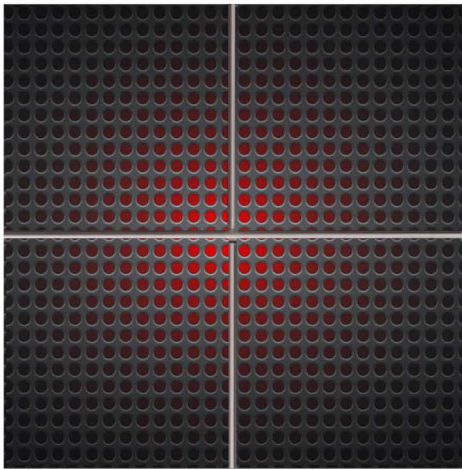
TOP PRODUCT Wide-format & Signage

Arizona
2016, 2017



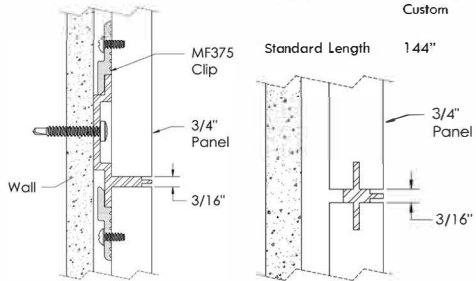


WALL PANEL SYSTEM - Perforated Panel



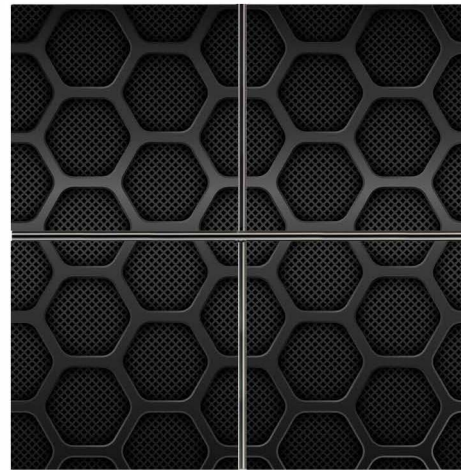
NARROW REVEAL

Reveal Thickness 3/16"
 Compatible Panel Thickness 3/8", 3/4"
 Finishes Clear, Black, Custom
 Standard Length 144"



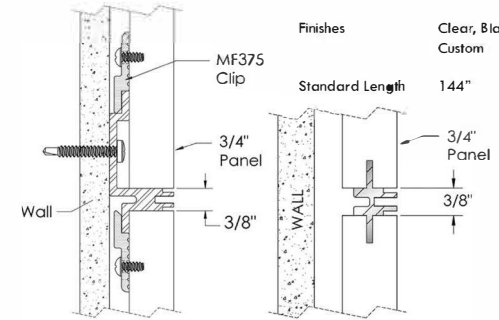
Horizontal Reveal
 3/4" Panel: EPS-H075-N
 3/8" Panel: EPS-H039-N

Vertical Reveal
 3/4" Panel: EPS-V075-N
 3/8" Panel: EPS-V039-N



NARROW CHANNEL

Reveal Thickness 3/8"
 Compatible Panel Thickness 3/8", 3/4"
 Finishes Clear, Black, Custom
 Standard Length 144"

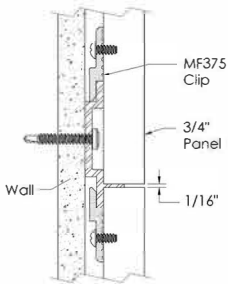
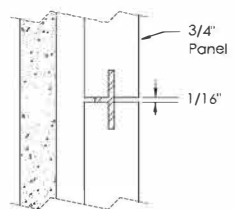


Horizontal Reveal
 3/4" Panel: EPS-H075-NC
 3/8" Panel: EPS-H039-NC

Vertical Reveal
 3/4" Panel: EPS-V075-NC
 3/8" Panel: EPS-V039-NC

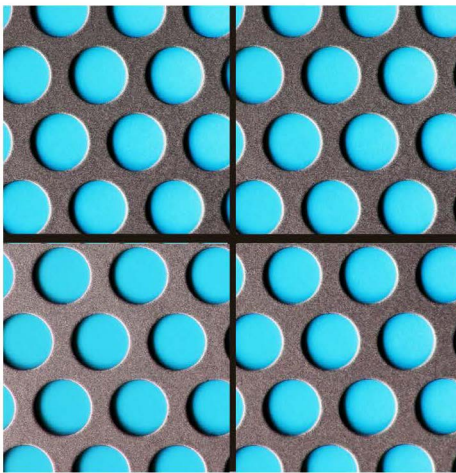
Reveal Thickness 1/16"
 Compatible Panel Thickness 3/8", 3/4"
 Finishes Clear, Black, Custom
 Standard Length 144"

RECESSED REVEAL



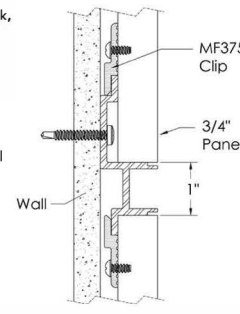
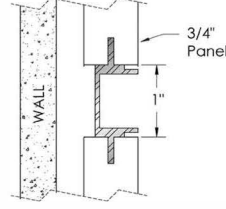
Vertical Reveal
 3/4" Panel: EPS-V075-R
 3/8" Panel: EPS-V039-R

Horizontal Reveal
 3/4" Panel: EPS-H075-R
 3/8" Panel: EPS-H039-R



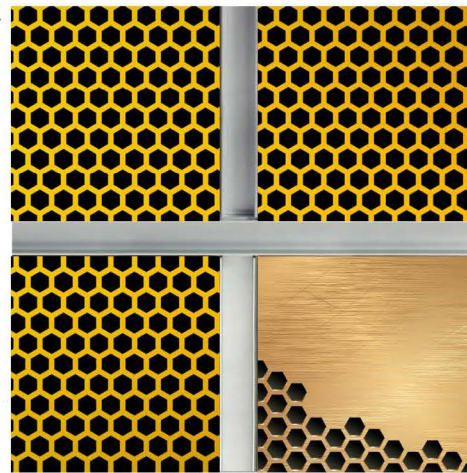
Reveal Thickness 1"
 Compatible Panel Thickness 3/8", 3/4"
 Finishes Clear, Black, Custom
 Standard Length 144"

WIDE CHANNEL



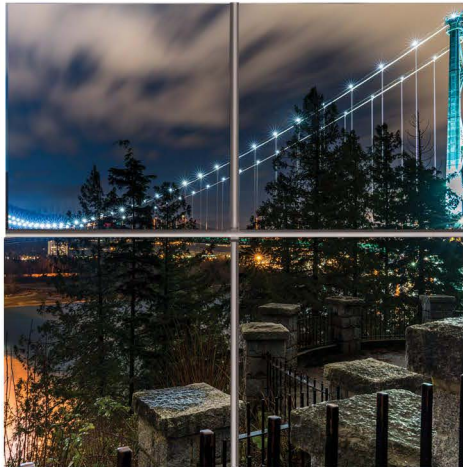
Vertical Reveal
 3/4" Panel: EPS-V075-WC
 3/8" Panel: EPS-V039-WC

Horizontal Reveal
 3/4" Panel: EPS-H075-WC
 3/8" Panel: EPS-H039-WC

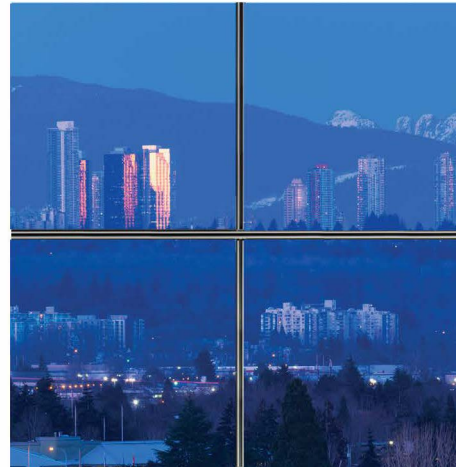
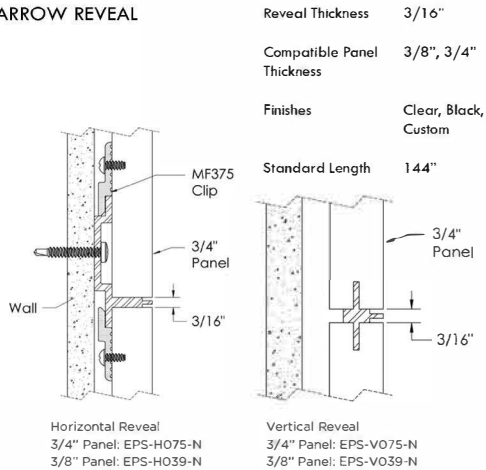




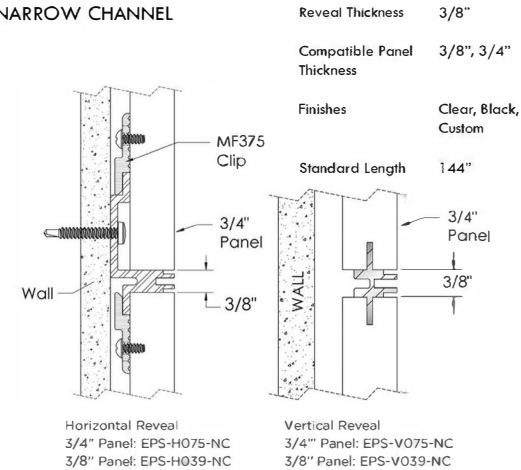
WALL PANEL SYSTEM - Vancouver Skyline



NARROW REVEAL



NARROW CHANNEL



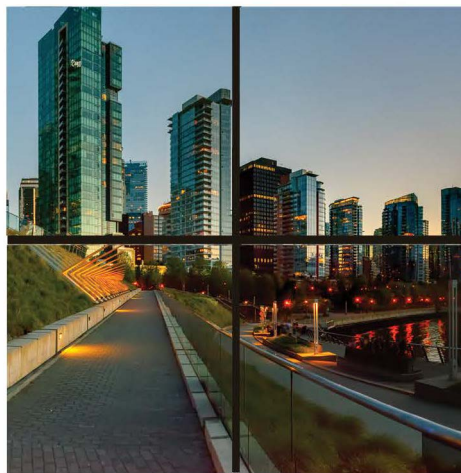
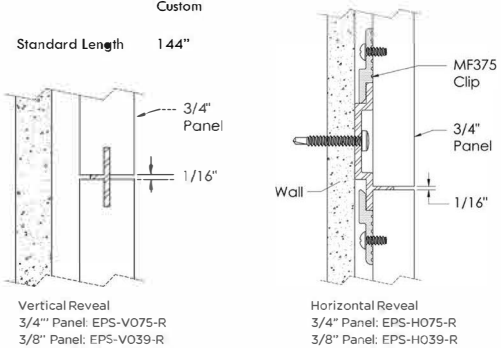
Reveal Thickness 1/16"

Compatible Panel Thickness 3/8", 3/4"

Finishes Clear, Black, Custom

Standard Length 144"

RECESSED REVEAL



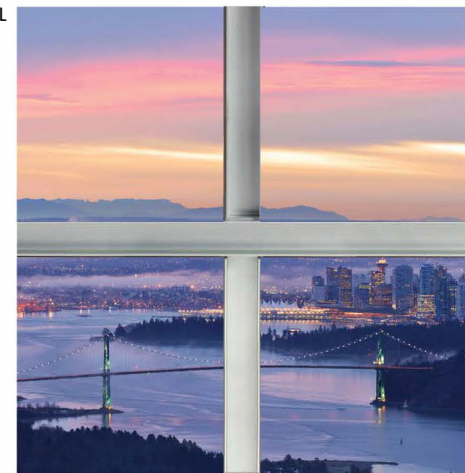
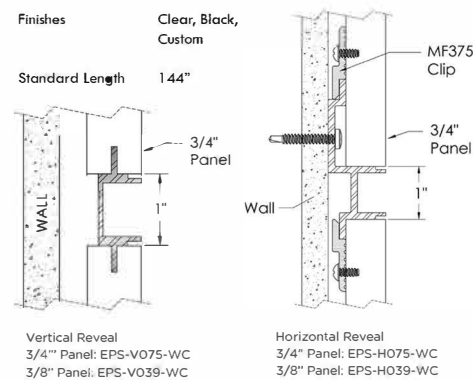
Reveal Thickness 1"

Compatible Panel Thickness 3/8", 3/4"

Finishes Clear, Black, Custom

Standard Length 144"

WIDE CHANNEL





STANDOFFS BARRELS

ARCHITECTURAL GRADE MATERIALS & FINISHES



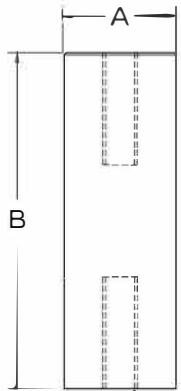
STAINLESS STEEL
(Brushed Finish)



ALUMINUM
(Clear Anodized Finish)



BRONZE
(Statuary Finish)



5/16" - 18
Tapped Hole
Both Ends



Ordering Notes

- Custom heights available
- Aluminum Barrels up to 1" in height are tapped thru, while 2" barrels and taller are tapped approximately 7/8" from each end

ALUMINUM BARRELS Standard

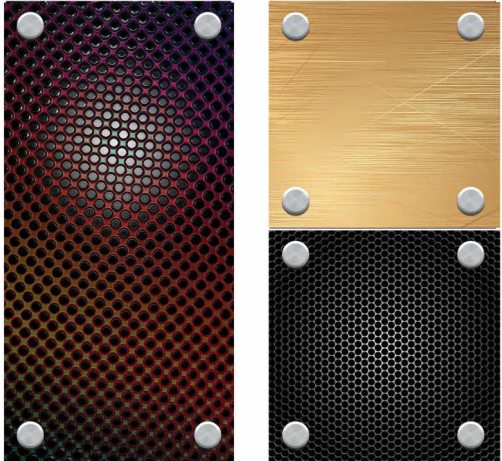
Part No.	Dia. (A)			
	1" Dia.	1 1/4" Dia.	1 1/2" Dia.	2" Dia.
1"	SO-AL-1BL-1	SO-AL-1.25BL-1	SO-AL-1.5BL-1	SO-AL-2BL-1
2"	SO-AL-1BL-2	SO-AL-1.25BL-2	SO-AL-1.5BL-2	SO-AL-2BL-2
3"	SO-AL-1BL-3	SO-AL-1.25BL-3	SO-AL-1.5BL-3	SO-AL-2BL-3
4"	CUSTOM	CUSTOM	CUSTOM	CUSTOM
6"	CUSTOM	CUSTOM	CUSTOM	CUSTOM





STANDOFFS BARRELS

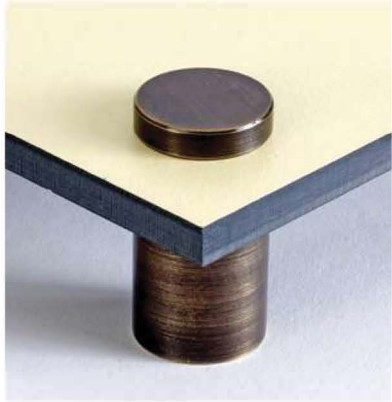
ARCHITECTURAL GRADE MATERIALS & FINISHES



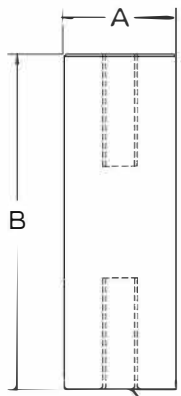
STAINLESS STEEL
(Brushed Finish)



ALUMINUM
(Clear Anodized Finish)



BRONZE
(Statuary Finish)



5/16" - 18
Tapped Hole
Both Ends



Ordering Notes

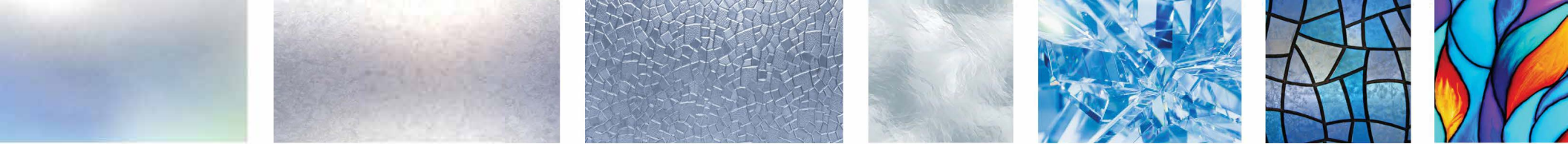
- Custom sizes are available
- Stainless Barrels up to 1.5" in height are tapped thru, while 2" barrels and taller are tapped approximately 3/4" from each end

STAINLESS STEEL BARRELS

Standard

Part No.	Dia. (A)			
Height (B)	1" Dia.	1 1/4" Dia.	1 1/2" Dia.	2" Dia.
1"	SO-SS-1BL-1	SO-SS-1.25BL-1	SO-SS-1.5BL-1	SO-SS-2BL-1
1 1/2"	SO-SS-1BL-1.5	SO-SS-1.25BL-1.5	SO-SS-1.5BL-1.5	SO-SS-2BL-1.5
2"	SO-SS-1BL-2	SO-SS-1.25BL-2	SO-SS-1.5BL-2	SO-SS-2BL-2
3"	SO-SS-1BL-3	SO-SS-1.25BL-3	SO-SS-1.5BL-3	SO-SS-2BL-3
4"	CUSTOM	CUSTOM	CUSTOM	CUSTOM
6"	CUSTOM	CUSTOM	CUSTOM	CUSTOM





STANDOFFS

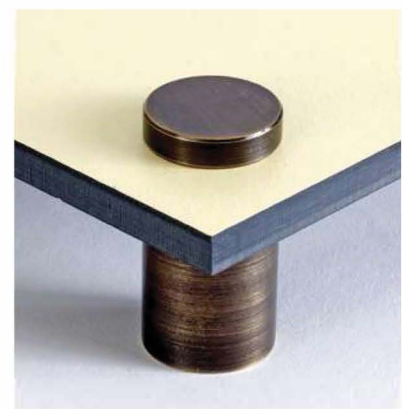
ARCHITECTURAL GRADE MATERIALS & FINISHES



STAINLESS STEEL
(Brushed Finish)



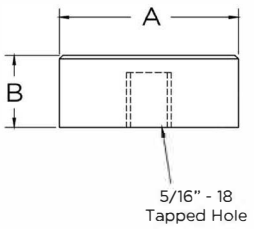
ALUMINUM
(Clear Anodized Finish)



BRONZE
(Statuary Finish)

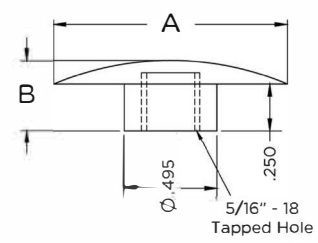
ALUMINUM CAP Standard

Part No.	Dia. (A)	Height (B)
SO-AL-1CAP	1"	3/8"
SO-AL-1.25CAP	1 1/4"	1/2"
SO-AL-1.5CAP	1 1/2"	1/2"
SO-AL-2CAP	2"	5/8"



Ordering Notes

- Note that the height of the cap varies with the diameter
- Custom sizes are available
- Specify threaded connector length when ordering



ALUMINUM CAP Low Profile

Part No.	Dia. (A)	Height (B)
SO-AL-1LPCAP	1"	3/8" Total (1/8" Exposed)
SO-AL-1.25LPCAP	1 1/4"	3/8" Total (1/8" Exposed)
SO-AL-1.5LPCAP	1 1/2"	3/8" Total (1/8" Exposed)
SO-AL-2LPCAP	2"	3/8" Total (1/8" Exposed)



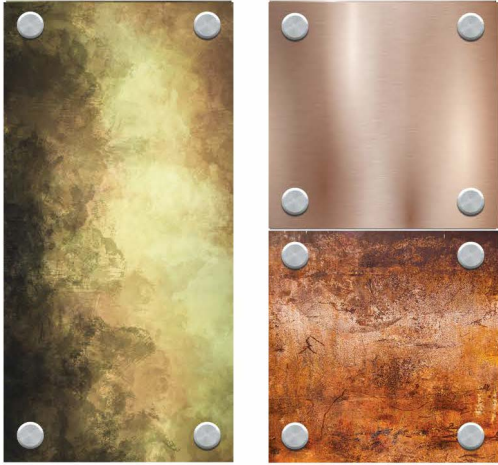
Ordering Notes

- Low profile caps require a 1/2" hole for installation
- Specify threaded connector length when ordering



STANDOFFS HARDWARE

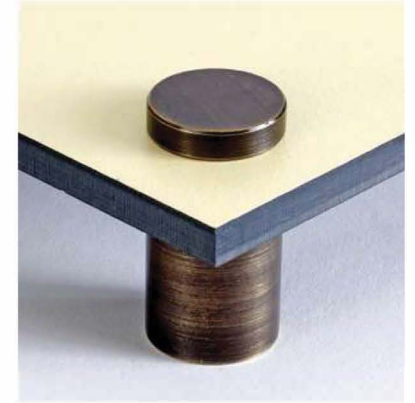
ARCHITECTURAL GRADE MATERIALS & FINISHES



STAINLESS STEEL
(Brushed Finish)

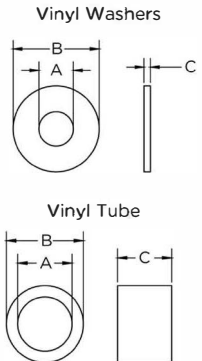


ALUMINUM
(Clear Anodized Finish)



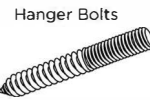
BRONZE
(Statuary Finish)

Also Available



Ordering Notes

- Custom sizes are available
- Ask for assistance from your sales representative



MOUNTING HARDWARE

Standard

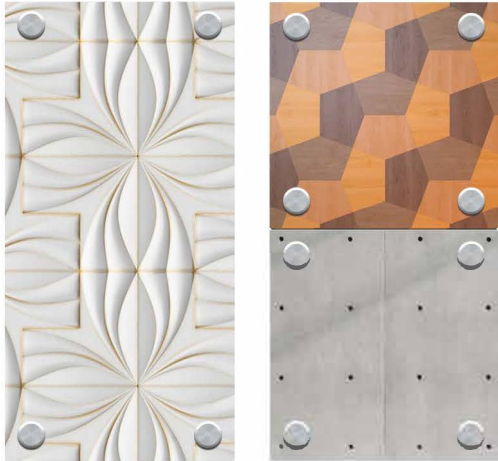
	Hanger Bolts			
	Part Number	Overall	Machine Thread	Wood Screw
Option A	HB-A	1 1/2"	5/8"	7/8"
Option B	HB-B	2 1/2"	1"	1 1/2"
Option C	HB-C	4"	2"	2"

	Tabletop Screw with Anchor	
	Part Number	Surface Thickness
Option A	TT-A	1" Thick Surface
Option B	TT-B	1.25" Thick Surface
Option C	TT-C	1.75" Thick Surface



STANDOFFS

ARCHITECTURAL GRADE MATERIALS & FINISHES



STAINLESS STEEL
(Brushed Finish)



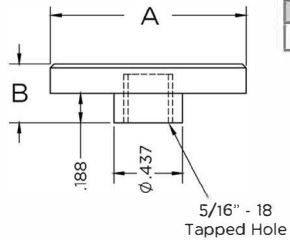
ALUMINUM
(Clear Anodized Finish)



BRONZE
(Statuary Finish)

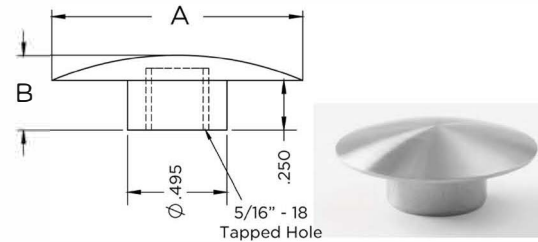
STAINLESS STEEL CAP Standard

Part No.	Dia. (A)	Height (B)
SO-SS-1CAP	1"	3/8" Total (3/16" Exposed)
SO-SS-1.25CAP	1 1/4"	3/8" Total (3/16" Exposed)
SO-SS-1.5CAP	1 1/2"	3/8" Total (3/16" Exposed)
SO-SS-2CAP	2"	3/8" Total (3/16" Exposed)



Ordering Notes

- Standard stainless caps require a 7/16" hole for installation
- Custom sizes are available
- Specify threaded connector length when ordering



STAINLESS STEEL CAP Low Profile

Part No.	Dia. (A)	Height (B)
SO-SS-1LPCAP	1"	3/8" Total (1/8" Exposed)
SO-SS-1.25LPCAP	1 1/4"	3/8" Total (1/8" Exposed)
SO-SS-1.5LPCAP	1 1/2"	3/8" Total (1/8" Exposed)
SO-SS-2LPCAP	2"	3/8" Total (1/8" Exposed)



Ordering Notes

- Low profile caps require a 1/2" hole for installation
- Specify threaded connector length when ordering



STANDOFFS

ARCHITECTURAL GRADE MATERIALS & FINISHES



STAINLESS STEEL
(Brushed Finish)



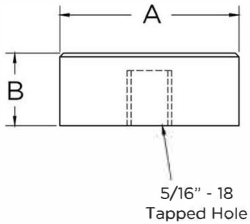
ALUMINUM
(Clear Anodized Finish)



BRONZE
(Statuary Finish)

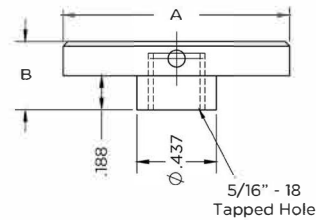
STAINLESS STEEL CAP No Stem

Part No.	Dia. (A)	Height (B)
SO-SS-INSCAP	1"	3/8"
SO-SS-1.25NSCAP	1 1/4"	1/2"
SO-SS-1.5NSCAP	1 1/2"	1/2"
SO-SS-2NSCAP	2"	5/8"



Ordering Notes

- ⌘ Please note that you are ordering the "No Stem" cap when ordering
- ⌘ Custom heights available
- ⌘ Specify threaded connector length when ordering



STAINLESS STEEL CAP Security Cap

Part No.	Dia. (A)	Height (B)
SO-SS-1SECCAP	1"	3/8" Total (3/16" Exposed)
SO-SS-1.25SECCAP	1 1/4"	3/8" Total (3/16" Exposed)
SO-SS-1.5SECCAP	1 1/2"	3/8" Total (3/16" Exposed)
SO-SS-2SECCAP	2"	3/8" Total (3/16" Exposed)



Ordering Notes

- ⌘ Security caps require a 7/16" hole for installation
- ⌘ (2) 3/32" holes for tightening with spanner wrench

LARGE FORMAT COLOR APPLICATION

OCE ARIZONA 2280XT Wide Format Flatbed Printer

Applications

BACKLIGHT SIGNS



Using light to create an element of interest and visual excitement to graphics.

Backlit signs are a visually captivating way to draw attention to a retail storefront and highlight a product or service.

[LEARN MORE](#)

GIS/MAPS



Help your customer visually represent data on a map or aerial photo and then filter that data to produce

This application is called Geographic Information System (GIS) and is controlled through software applications such as ArcGIS and ArcView.

[LEARN MORE](#)

SIGNAGE



Help your customers make bold statements with their signage. a type of visual report.

From durable outdoor banners that can withstand the weather for several seasons to indoor promotional posters that change on a daily basis.

[LEARN MORE](#)

LARGE FORMAT COLOR APPLICATION

OCE ARIZONA 2280XT Wide Format Flatbed Printer

Applications

DIMENSIONAL/ TEXTURED



Help your customers embrace their sense of touch and experience print in new ways.

Print does not need to be limited to the sense of sight but can also be a tactile experience. Now you can have display graphics that not only look good but feel good too.

[LEARN MORE](#)

PACKAGING



Target short-run, niche packaging to local retailers or specialty product manufacturers.

As markets become more localized, the demand for short-run packaging has increased. With innovative Canon large format printing solutions, you can produce sample packages enabling creative professionals to work efficiently to refine their designs.

[LEARN MORE](#)

TEXTILES



Fabric based graphics are showing up everywhere.

Now you can offer your customers this low-cost, lightweight, flexible, washable, easy to pack and ship alternative to rigid substrates.

[LEARN MORE](#)

LARGE FORMAT COLOR APPLICATION

OCE ARIZONA 2280XT Wide Format Flatbed Printer

Applications

INTERIOR DECOR



One of the largest growing markets in digital printing is interior decor.

Wall coverings, wall murals, back/its, curtains or flooring can all be personalized for the environment.

[LEARN MORE](#)

POINT-OF-PURCHASE DISPLAYS



Point-of-purchase marketing or POP takes over when the customer is already in the store and ready to make a purchase.

POP displays and marketing techniques draw attention to particular brands or special offers that create additional value or showcase the advantages of products.

[LEARN MORE](#)

WINDOW GRAPHICS



Windows provide a perfect location to promote products and services with indoor point-of-purchase (POP) signs.

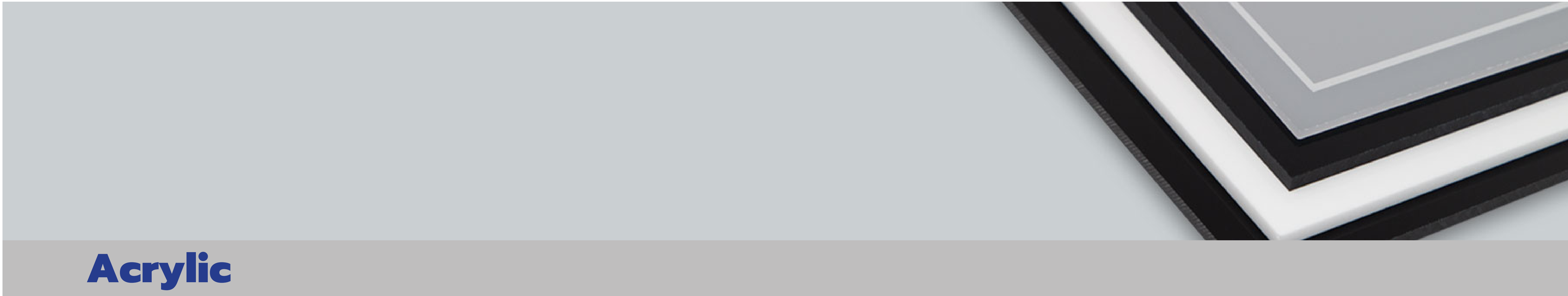
With window graphics, you can offer your customers a way to create a permanent message or change out messaging often for promotions that increase traffic through the door.

[LEARN MORE](#)

LARGE FORMAT COLOR APPLICATION

OCE ARIZONA 2280XT Wide Format Flatbed Printer

Substrates



Color options:

Clear
Bronze
White
Black
Yellow
White

Red
Flourescent Green

Acrylic is manufactured in two versions- cast and extruded. Extruded Acrylic Sheet is manufactured by using a continuous extrusion process. Because an extrusion based process is used to manufacture the sheet, extruded acrylic has a lower molecular weight than sheets produced in the cell cast process. This process creates a more economical sheet and tighter tolerances. Cast Acrylic Sheet provides the greatest optical clarity and stability. The process of casting yields a more rigid product, making it more chemical resistant and suited for applications that require thick, clear and distortion free material.

Extruded Acrylic:

- More economical
- Better thickness tolerance
- Thermoforms faster
- Less particle contamination to the sheet

Cast Acrylic:

- Greater optical clarity, less distortion.
- Stronger physical properties
- Better chemical resistance against crazing
- Great Machinability

Applications:

- Digital Printing
- POP Display
- Photography
- Signs
- Privacy Screens
- Creative projects
- Photography

LARGE FORMAT COLOR APPLICATION

OCE ARIZONA 2280XT Wide Format Flatbed Printer

Substrates



Color options:

- Black/Black
- White/Black/White
- Silver/Gold
- Red/Red
- Blue/Blue
- White/White

- White/Black
- White/MILL
- Silver/Silver
- Ultra White/Ultra White
- Silver/Mill
- Brushed Aluminum/Black
- Red/Yellow

Aluminum Composite Panels

Aluminum Composite Material (ACM) is a type of flat panel that consists of two thin aluminum sheets bonded to a non-aluminum core. ACM is used within the signage industry as an alternative to heavier, more expensive substrates. ACM is also used for external and internal architectural cladding or partitions, false ceilings, machine coverings, container construction etc. ACM material is widely used in the digital print and screen printing industry.

Polyethylene Core (PE)

- More economical
- Light weight
- Good rigidity
- Adaptable

Alumalite:

- Temperature-resistant
- Better imaging
- Very light weight
- Wind-resistant

Applications:

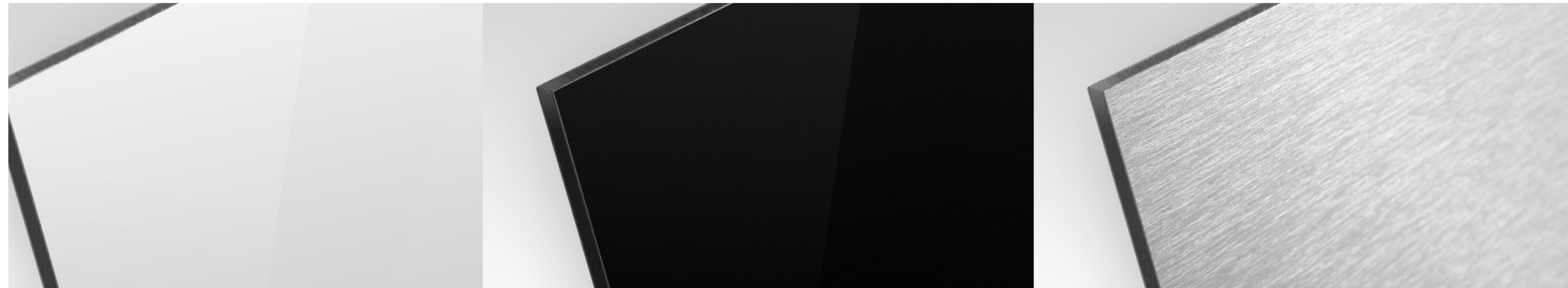
- Indoor and outdoor signs
- POP displays
- Exhibits and kiosks
- Framing and mounting
- Architectural Signage
- Digital Print
- Fascia Signs
- Multiple Panel Signs
- Billboards
- Post & Panel Signs / Real Estate
- Dimensional Letters / Cut-outs
- Scoreboards
- Canopies
- ADA Compliant / Wayfinding Signs

- Temporary Construction & Traffic / Regulatory Signs
- Fine Art Murals

LARGE FORMAT COLOR APPLICATION

OCE ARIZONA 2280XT Wide Format Flatbed Printer

Substrates



Color options:

Black
White

Aluminum Sheets

Aluminum is a popular sheet metal used to create indoor or outdoor signs. Due to its flexibility, wide range of options, cost effectiveness, and other properties, aluminum sheets are popular amongst the sign and graphics industry. Aluminum sheets are available with rounded corners, hole punching and can be digitally printed.

Aluminum Sheets

- Cost effective
- Weather resistant
- Good rigidity
- Adaptable

Applications:

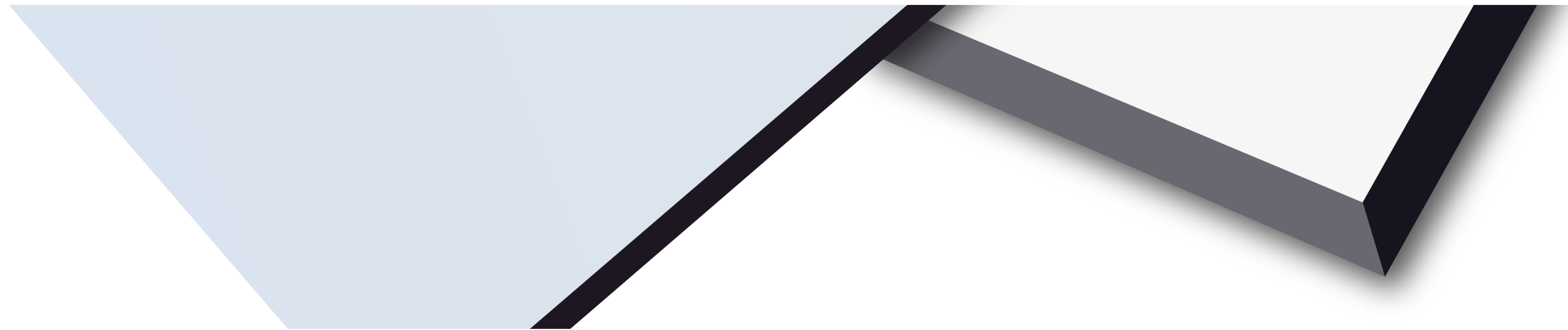
- Indoor and outdoor signs
- POP displays
- Exhibits and kiosks
- Framing and mounting
- Architectural Signage
- Corporate ID
- Digital Print
- Fascia Signs
- Multiple Panel Signs
- Post & Panel Signs / Real Estate
- Canopies
- ADA Compliant / Wayfinding Signs
- Kiosks
- Temporary Construction & Traffic / Regulatory Signs

- Fabrication / 3D Signs

LARGE FORMAT COLOR APPLICATION

OCE ARIZONA 2280XT Wide Format Flatbed Printer

Substrates



Color options:

Black
White
Wood

Foam Boards

Our foam boards have bright white, rigid, ultra-smooth PVC surfaces with a black or white foam PVC core. Rigid exterior layers offer better structural strength than standard foam PVC. These boards are almost 50% lighter than aluminum composite material (ACM) with easier workability.

Foam Boards

- Versatile
- Very light weight
- Scratch resistant
- Recycled material

Applications:

- POP and retail displays & signage
- Exhibits and kiosks
- Routed and relief lettering
- Industrial and construction signs
- Fabricated and structural parts

LARGE FORMAT COLOR APPLICATION

OCE ARIZONA 2280XT Wide Format Flatbed Printer

Substrates



Color options:

Black
White
Red
Yellow
Brown
Orange

Ivory
Green
Silver
Dark Blue
Blue
Gray
Navy Blue

Corrugated Polypropylene

Fluted/Corrugated Polypropylene is ideal for indoor and outdoor applications while being tougher than corrugated fiberboard and lighter than extruded plastic sheet. It is waterproof, stain-resistant, and resistant to some chemicals. Fluted Polypropylene boards are commonly utilized for its excellent adhesion quality in markets such as printing for the graphics arts field, display and packaging.

Corrugated Polypropylene

- Cost effective
- Light weight
- Good rigidity
- Colorful

Applications:

- Indoor and outdoor signs
- Building & Construction/ Flooring
- Countertop Templates/Cabinetry
- POP/Display
- Printing/Graphics
- Packaging

LARGE FORMAT COLOR APPLICATION

OCE ARIZONA 2280XT Wide Format Flatbed Printer

Substrates



Wood / Composites

Omega SignBoard features a hardwood core composed of a premium, exterior furniture-grade plywood with smooth, tight, sanded veneers for optimum surface beauty. With its brilliant white vinyl finish, the surface of Omega SignBoard is impact-resistant and formulated with high-performance UV inhibitors to reduce fading.

Wood Composite

- Color fast
- Vibrant color printing
- Good rigidity
- Good aesthetics

Applications:

- Digital Print
- Wall and Fence Mounted Signs
- Post & Panel Signs / Real Estate
- Dimensional Letters / Cut-outs
- Scoreboards
- Hanging Signs
- A-Frame Signs

LARGE FORMAT COLOR APPLICATION

OCE ARIZONA 2280XT Wide Format Flatbed Printer

Substrates



Back Lit Banner

Banners are an excellent substrate for both promotional material and decoration. It is usable in darker environments due to the thin material that allows for light to pass through it. It is also popular as a decor for sets and interiors. Back lit banners are also the best option for larger printing needs, as they can be easily put into rolls and shipped in small sizes.

Back Lit Banner

- Double-sided printable
- Extra large sizing
- Flexible
- Durable for outdoors

Applications:

- Back-Lit Illuminated Signs
- LED or Fluorescent Large and Small Light Boxes
- Billboards
- Awnings
- Flats